

4G Cat1/Cat4 数据采集棒

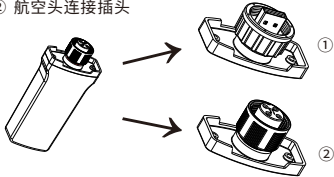
使用手册

产品介绍

4G Cat1/Cat4数据采集棒是爱士惟自主研发的智能数据采集设备,负责采集光伏逆变器工作数据,并上传云端。

采集棒按照与逆变器的连接方式,分为两种:

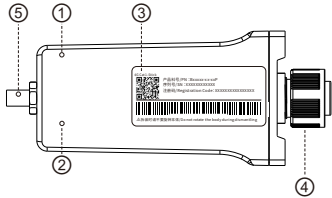
- ① USB 连接插头
- ② 航空头连接插头



产品特性

- 远程固件升级
- 网络诊断
- LED指示
- 即插即用
- 断点续传
- IP65防护

产品指示



- ① 蓝色LED:网络通讯指示
- ② 绿色LED:逆变器通讯指示
- ③ 产品标签:展示产品信息
- ④ 浮动螺母:连接到逆变器
- ⑤ 天线接头:连接天线到数据采集棒

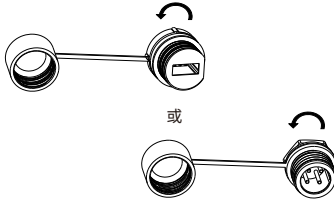
注:LED只有在采集棒上电工作后才会点亮显示

包装清单

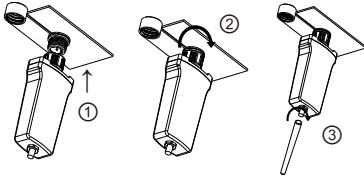
编号	名称	数量
1	数据采集棒	1
2	使用手册	1
3	天线	1

安装说明

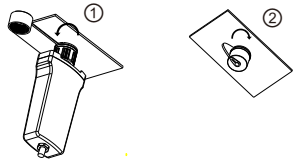
首先逆时针拧掉逆变器上对应的防尘帽。



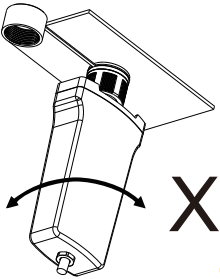
插入数据采集棒,沿顺时针方向拧紧浮动螺母。然后将天线沿顺时针方向拧紧在天线接头上,如下图所示。



拆卸数据采集棒时,请按下图所示**逆时针旋转浮动螺母**,数据采集棒取下后请顺时针拧紧防尘帽,保证逆变器防护。



注意:安装或拆卸数据采集棒时,请勿旋转采集棒本体。



4G Cat1/Cat4-Stick

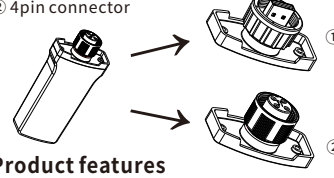
User Manual

Product Introduction

4G Cat1/Cat4-Stick is a wireless communication module developed by AiSWEI. It will collect the operating data of inverters and upload the data to the cloud.

According to the connection with the inverter, there are two types connectors for 4G Cat1/Cat4-Stick:

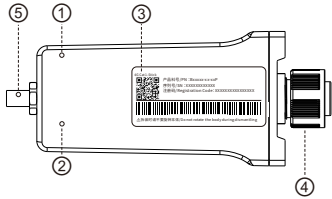
- ① USB
- ② 4pin connector



Product features

- Remote firmware update
- Network diagnosis
- LED indicators
- Plug-in connector
- Automatic resumption of data transmission once network recovering
- IP65 Protection Class

Product Manual



- ① Blue LED: Indicator for network communication
- ② Green LED: Indicator for inverter communication
- ③ Type label: Product information
- ④ Rotating nut: Stick connection to the inverter
- ⑤ Antenna connector: Antenna connection to Stick

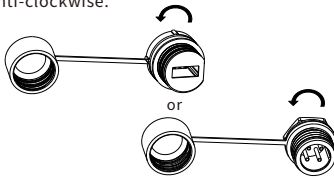
Note: LED will only start working after power is on.

Delivery List

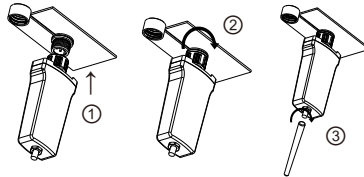
No.	Name	Quatity
1	Stick	1
2	User Manual	1
3	Antenna	1

Installation Guide

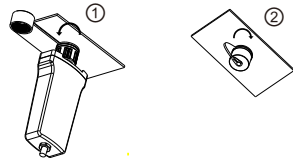
Please remove the anti-dust cap of the connector on the inverter by rotating anti-clockwise.



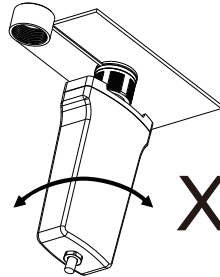
Insert the Stick to the connector on the inverter. Tighten the rotating nut on the Stick clockwise. Finally tighten the antenna clockwise on the antenna connector, as shown in the figure on the right.



When removing the Stick from the inverter, please **unscrew the nut anti-clockwise** as shown in the figure below. Tighten the anti-dust cap on the inverter connector clockwise to ensure protection class.



Caution: Please do not rotate the Stick main body during installation.



电站监控

App下载

用户可通过扫描如下二维码下载安装AiSWEI App, 然后进行安装。



Android/iOS

微信公众号

关注微信服务公众号获取更多服务。



Plant Monitoring

App download

Download the AiSWEI App by scanning the QR code below.



Android/iOS

Account registration and plant creation

Open the AiSWEI App and register a new account. After completing the account registration and logon, click on the “+” icon to create a plant. Please refer to the App user manual for further details.

Note: After Stick is powered on, the base network is automatically registered without configure the network.

创建账号及电站

打开AiSWEI App, 点击首页左上方注册账号。注册登陆之后, 点击右上“+”创建电站。具体可参考App操作说明书。

注: 数据采集棒上电之后, 会自动注册基础网络, 无需配置网络。

LED indicators and troubleshooting

Green LED: Inverter communication indicator

- Green LED turns off: Stick hardware fault, Please contact our service.
- Green LED turns on: Data collection is normal.

Blue LED: Network communication indicator

- Blue LED turns off: Stick is not registered to the base network.Try restarting or contacting our service.
- Blue LED blinks quickly: Stick has registered to base network, but in dialing. If dialing for a long time, the base network might be abnormal, please contact our service.
- Blue LED blinks slowly: Stick is properly connected to the cloud server for GSM network (4G Cat1-Stick) or 2G/3G network (4G Cat4-Stick).
- Blue LED lights on: Stick is connected to the cloud server for LTE network (4G Cat1-Stick) or LTE/FDD network (4G Cat4-Stick).

LED指示及故障排除

绿色LED: 逆变器通讯指示

- 绿色LED灯灭: 数据采集棒数据采集端硬件故障, 请联系售后。
- 绿色LED灯常亮: 数据采集正常。

蓝色LED: 网络通讯指示

- 蓝色LED灯灭: 数据采集棒没有注册到基础网络, 请尝试重新启动或联系售后。
- 蓝色LED灯快速闪烁: 数据采集棒注册到基础网络, 但在拨号中。若长时间处于拨号状态, 则为基站网络异常, 请联系售后。
- 蓝色LED灯慢速闪烁: 数据采集棒正常连接到云端服务器, 但为GSM网络 (4G Cat1-Stick) 或 2G/3G网络 (4G Cat4-Stick)。
- 蓝色LED灯常亮: 数据采集棒连接到云端服务器, 且为LTE网络 (4G Cat1-Stick) 或LTE/FDD网络 (4G Cat4-Stick)。

Warranty

Thank you for purchasing the 4G Cat1/Cat4-Stick from AISWEI New Energy Technology (Jiangsu) Co., Ltd. Please keep this warranty card carefully, so that you could enjoy our full-service benefits.

Filled in by the customer:

User name		Contact person	
Product name		Purchase date	
Serial number			
Contact number			
Address			
Order number			
Service information	Date	Description	

产品质保

感谢您购买爱士惟新能源技术(江苏)有限公司的数据采集棒,为了更好的为您服务,请妥善保管好质保卡。需要使用时, 请认真阅读、填写此质保卡。

客户填写内容:

用户名		联系人	
产品名称		购买日期	
序列号			
联系电话			
用户地址			
订单编号			
维修记录	日期	故障原因及处理	

Warranty description

Please send the faulty device and warranty card together back to AiSWEI service center. The shipping cost will be covered by the customer.

Note

1. From the date on the purchasing invoice, any quality issue which happens within warranty period will be fully covered by the warranty.
2. The warranty does not cover damages that occur due to incorrect installation, commission, inappropriate storage and other unreasonable factors.

联系方式

爱士惟新能源技术(江苏)有限公司
服务热线: 400 801 9996
服务邮箱: service.china@aiswei-tech.com
网址: www.aiswei-tech.com
地址: 江苏省苏州市高新区向阳路198号9栋
(邮编:215011)

合格证
本产品经检验符合出厂标准

Contact

AISWEI New Energy Technology(Jiangsu)Co., Ltd.
Hotline: +86 400 801 9996 (Mainland)
+886 809 089 212 (Taiwan)
Service email: service.china@aiswei-tech.com
Web: www.aiswei-tech.com
Add.: No. 198 Xiangyang Road, Suzhou 215011, China

Qualification Certification

This product has passed the factory quality check control