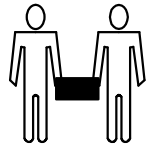


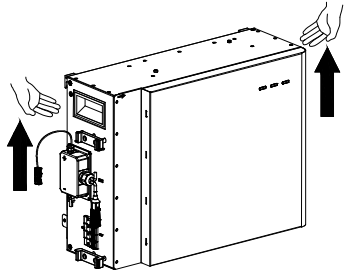
## 1.0 Transport

During transportation, please follow these guidelines:

1. The original packaging should be used for transportation.
2. Transport the battery carefully and safely. Choose the appropriate handling method according to the weight. Keep the battery secured during transportation.



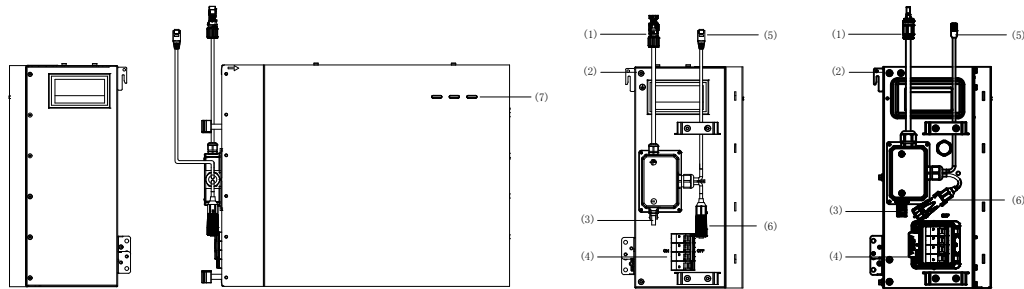
3. During transportation, please keep the packaging away from dangerous sources and take waterproofing measures.
4. After taking the battery out of the carton, please grasp the handles on both sides of the battery for handling.



## 2.0 Instructions

### 2.1 Product Overview

#### 2.1.1 Interface



- (1) BAT+ Power Connector
- (2) Grounding Point
- (3) BAT- Power Connector
- (4) Battery Circuit Breaker
- (5) BMS COM1
- (6) BMS COM2 (with Termination Resistor)
- (7) LED Display

All pictures shown are for reference only.  
Actual appearance may vary.

### 2.1.2 LED Display

#### SOC Display

During battery normal operation, three LED lights on the front cover indicate the battery SOC with different lighting patterns.

:White LEDs are flashing (0.5s on and 0.5s off) :White LEDs are glowing :White LEDs are off

LED Pattern	Battery SOC
	<b>SOC≤10%</b>
	<b>10%&lt;SOC≤30%</b>
	<b>30%&lt;SOC≤50%</b>
	<b>50%&lt;SOC≤60%</b>
	<b>60%&lt;SOC≤90%</b>
	<b>90%&lt;SOC≤100%</b>

#### Operating Status Display

The LEDs indicate the operating status of the battery.

Standby: all white LEDs are flashing (0.5s on and 0.5s off).

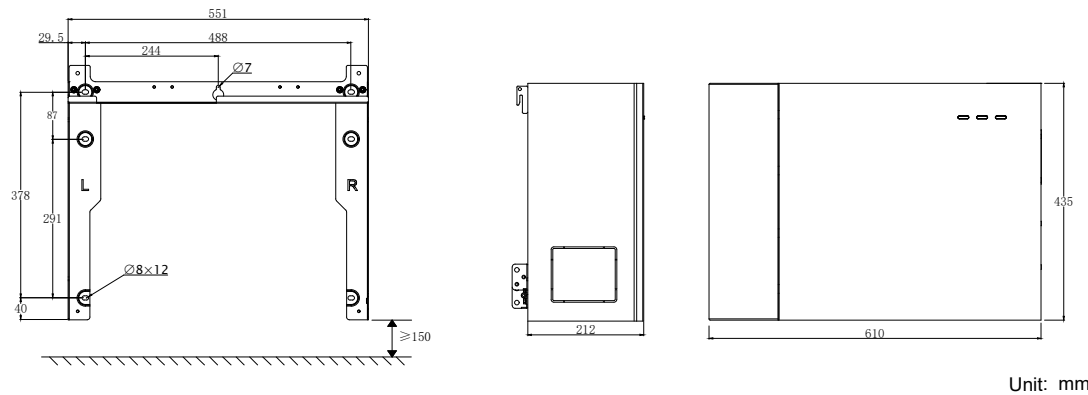
Normal: white LEDs are glowing or flashing (0.5s on and 1.5s off).

Protection: yellow LEDs are glowing or flashing (0.5s on and 0.5s off).

Error: yellow LEDs are glowing or flashing (0.5s on and 0.5s off).

Shutdown: all LEDs are off.

## 2.2 Dimensions



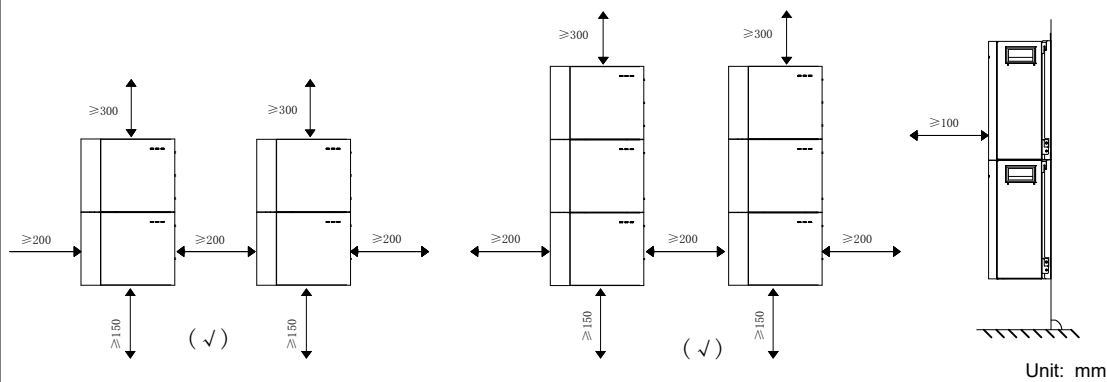
Unit: mm

## 2.3 Installation Space Requirements

### NOTE

- Reserve sufficient space around the battery for installation, maintenance and heat dissipation.
- The side clearance provided is a recommendation which can be adjusted according to the end users' requirements and site environment.
- Local Standards may pose extra clearance requirements, particularly regarding clearances between the Battery System and other Electrical Appliances, please comply with the local standards.

01 02



## 2.4 Scope of Delivery

SMILE-G3-BAT-4.5S			
Battery (×1)	Battery Cable Cover (×1)	Wall Bracket (×1)	Grounding Bar (×1)
Flange Nut M5 (×7)	Hexagon Head Screw M5*12 (×3)	Wall Anchor ST6*55 (×6)	Quick Installation Guide (×1)

Base Unit (Optional)								
Base Unit (×1)	Top Wall Bracket (×1)	Limit Card-board (×1)	Right Connection Plate (×4)	Right Connection Block for Base Unit (×1)	Limit Block (×8)	Screw M5*10 (×9)	Screw M5*12 (×10)	Limit Screw M5*10 (×9)

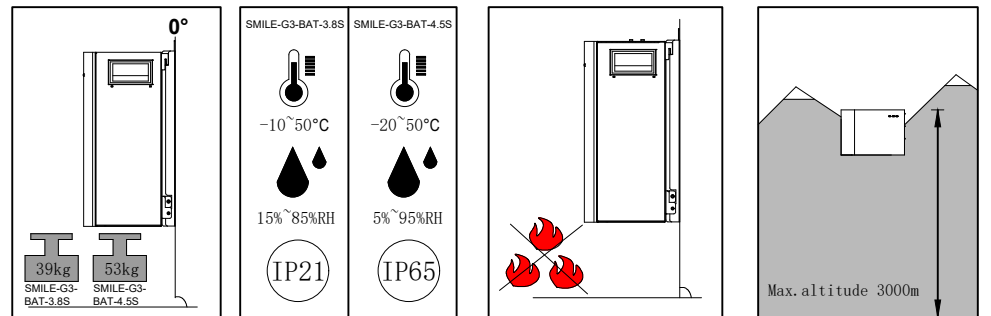
\* Only for SMILE-G3-BAT-3.6S/4.0S/4.5S

\*\* Only for SMILE-G3-BAT-3.8S battery stacking positioning

Top Cover Unit (Optional)			
Top Cover (×1)	Top Cover Support (×2)	Screw M5*12 (×5)	Screw M4*8 (×5)

Cable Sets of Distanced Horizontal Battery Expansion (Optional)				
Main Negative Power Extension Cable (×1)	Power Cable Between Two Column Series Batteries (×1)	Communication Cable Between Two Column Series Batteries (×1)	M5 Y Type Terminal (×3)	BAT Connector Disassembling Tool (×1)

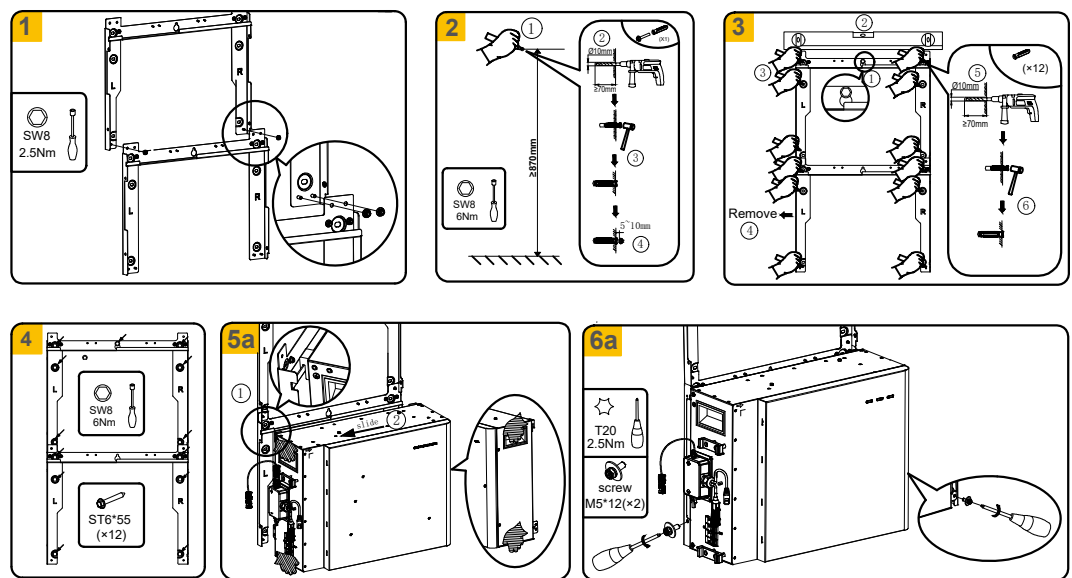
## 2.5 Mounting Location Requirements



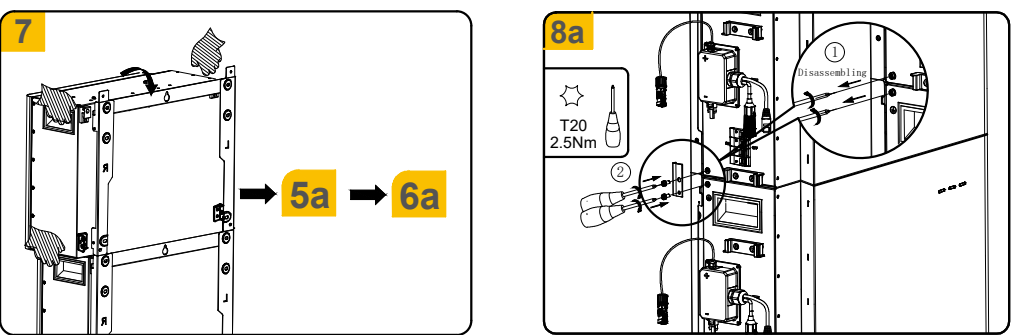
## 3.0 Installation

### 3.1 Wall Bracket Installation

#### 3.1.1 Multiple Batteries Installation

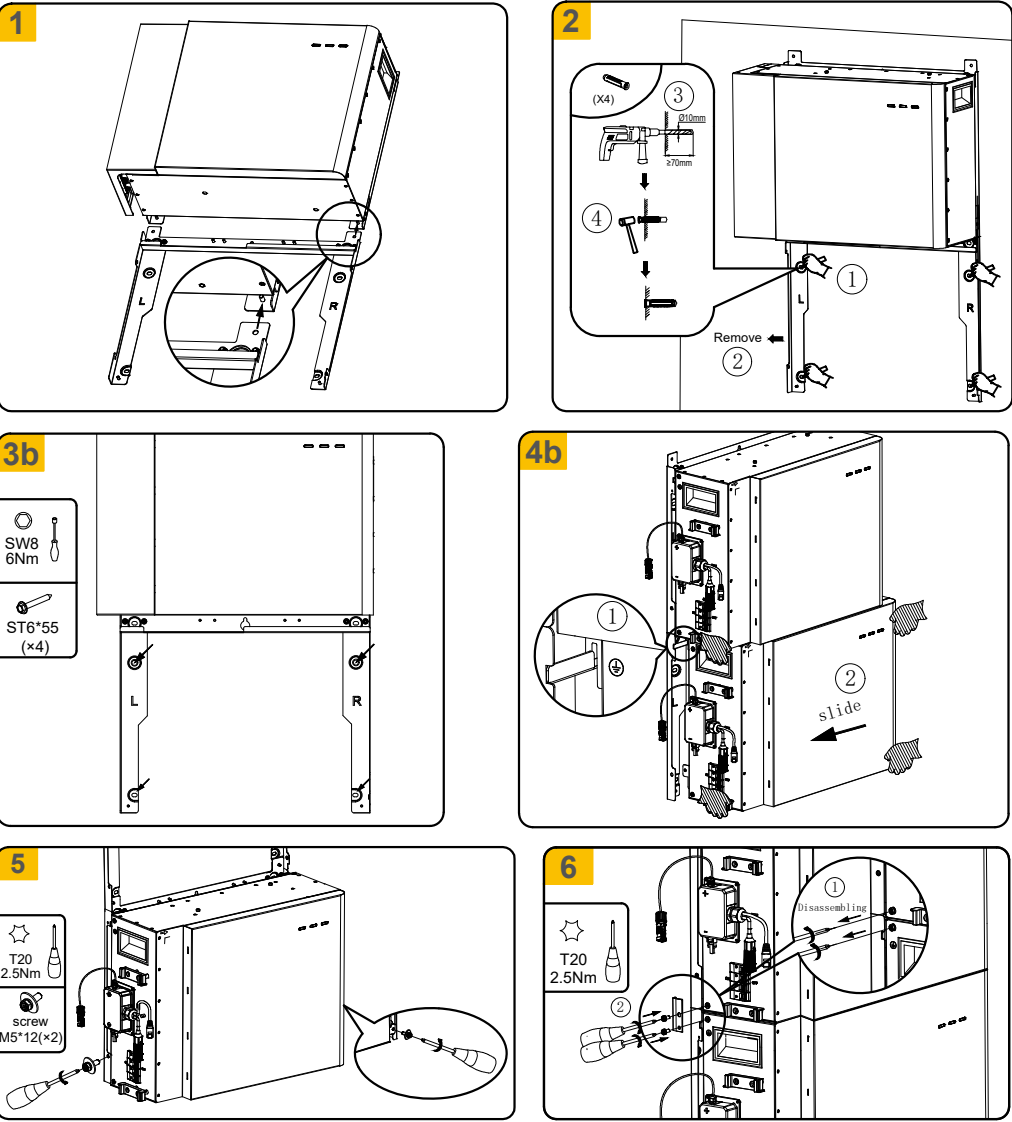


03 04




### 3.1.2 Expansion Batteries Installation

Expansion batteries should be mounted below the existing wall-mounted batteries.



### 3.1.3 Disassembling Wall-Mounted Battery

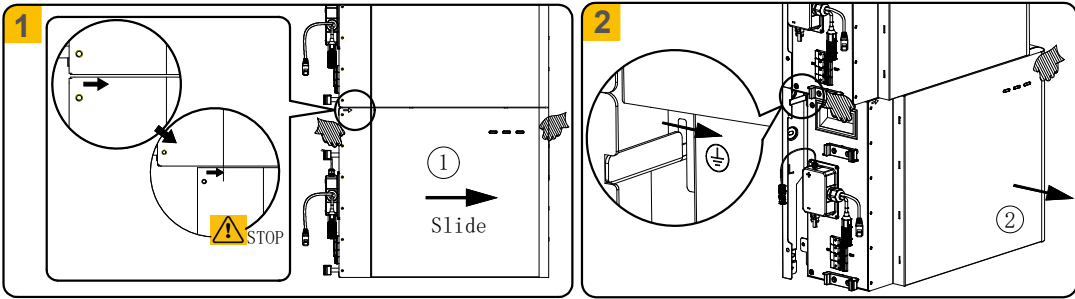
 **CAUTION**

**Risk of injury due to the weight of the battery**  
Incorrectly lifting or dropping the battery during transportation, mounting, or disassembling may lead to injuries.

- Transport and lift the battery carefully. Take the weight of the product into account.
- Always have two people to mount and disassemble the product.
- Wear suitable personal protective equipment for all work on the product.

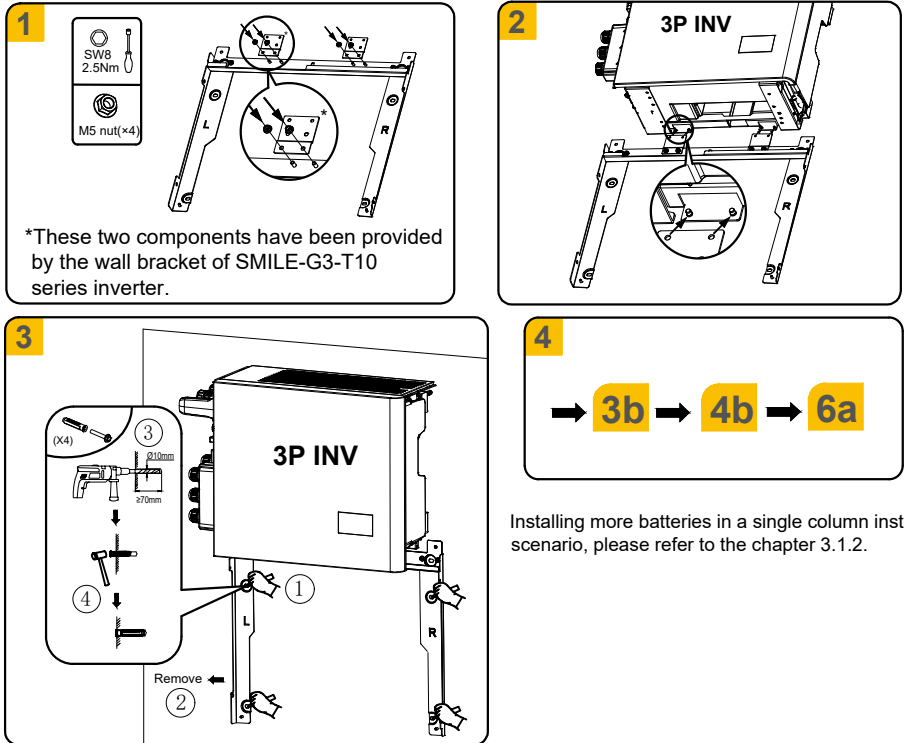
Before disassembling the batteries, please disassemble the cable cover and then switch off the battery circuit breaker, unplug the power connectors and communication connectors.

When disassembling the battery that has been mounted with a wall bracket and has not directly connected to the inverter, always hold the handles on both sides of the battery firmly and slide it to the right. Once the arrow on the upper left of the cover aligns to the left protruding side of the upper battery, carefully lift the battery forward and off the wall bracket.



### 3.1.4 First Battery Installation for Wall Mounted Inverter

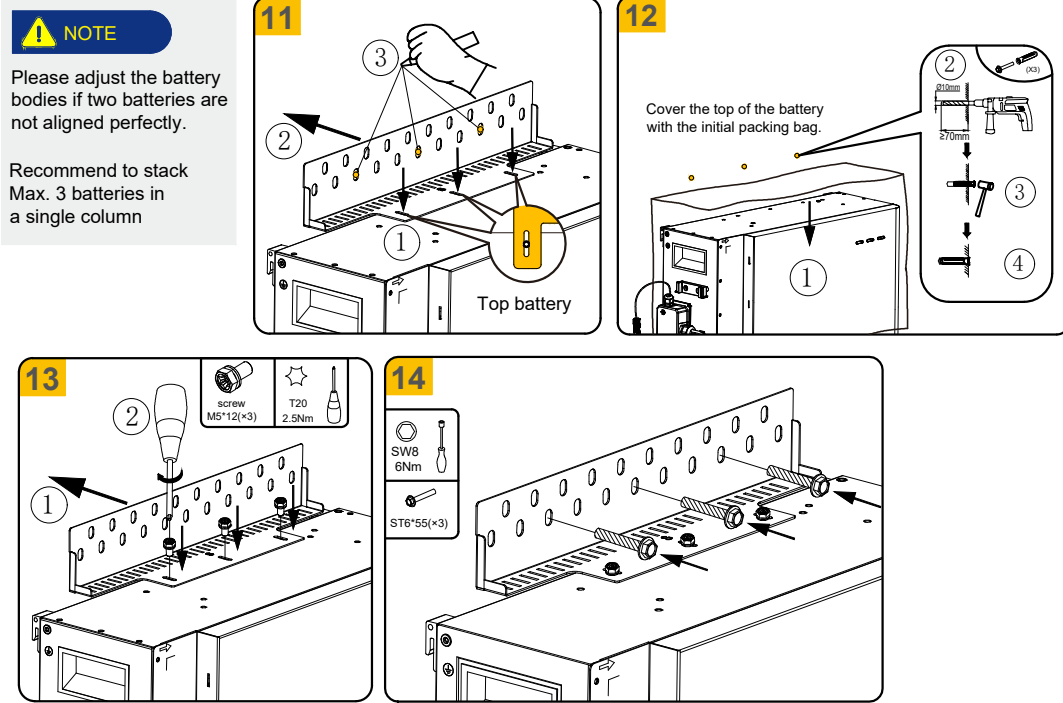
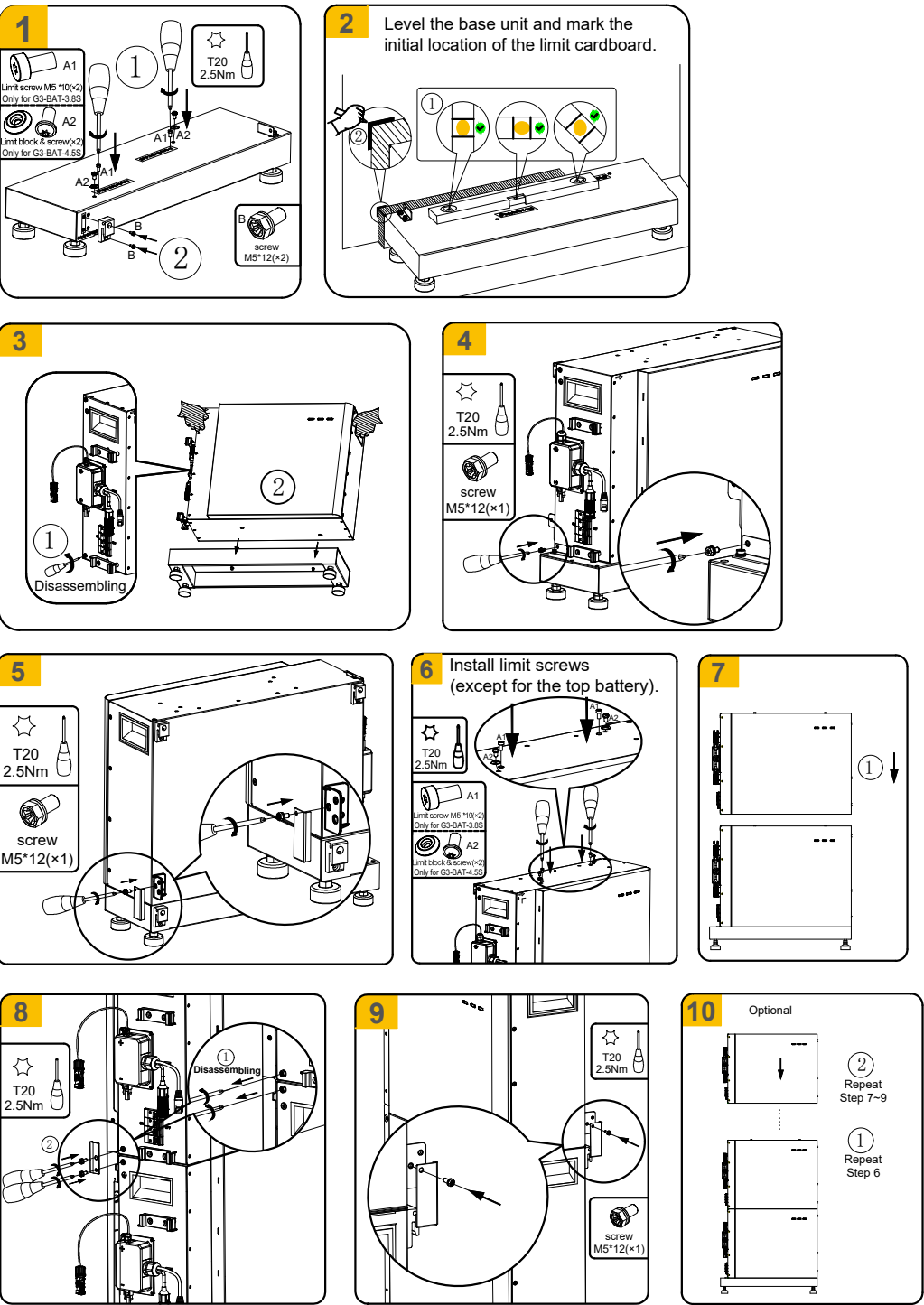
For SMILE-G3-T10 series inverter mounting scenario



For SMILE-G3 single phase inverter mounting scenario, please refer to Quick Installation Guide chapter 4 Mounting the Battery (if any) of Wall Mounting of SMILE G3-S Series Inverter.

05 06

### 3.2 Battery Base Installation (Optional)



If you want to mount batteries in the second column, please repeat the mounting steps from 1 to 14.

07 08

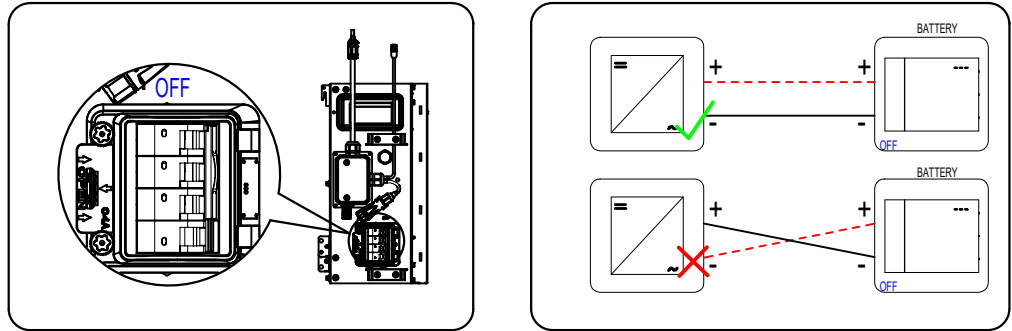
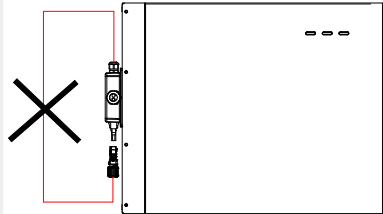
4.0 Electrical Connection

Electrical connection between the inverter and batteries

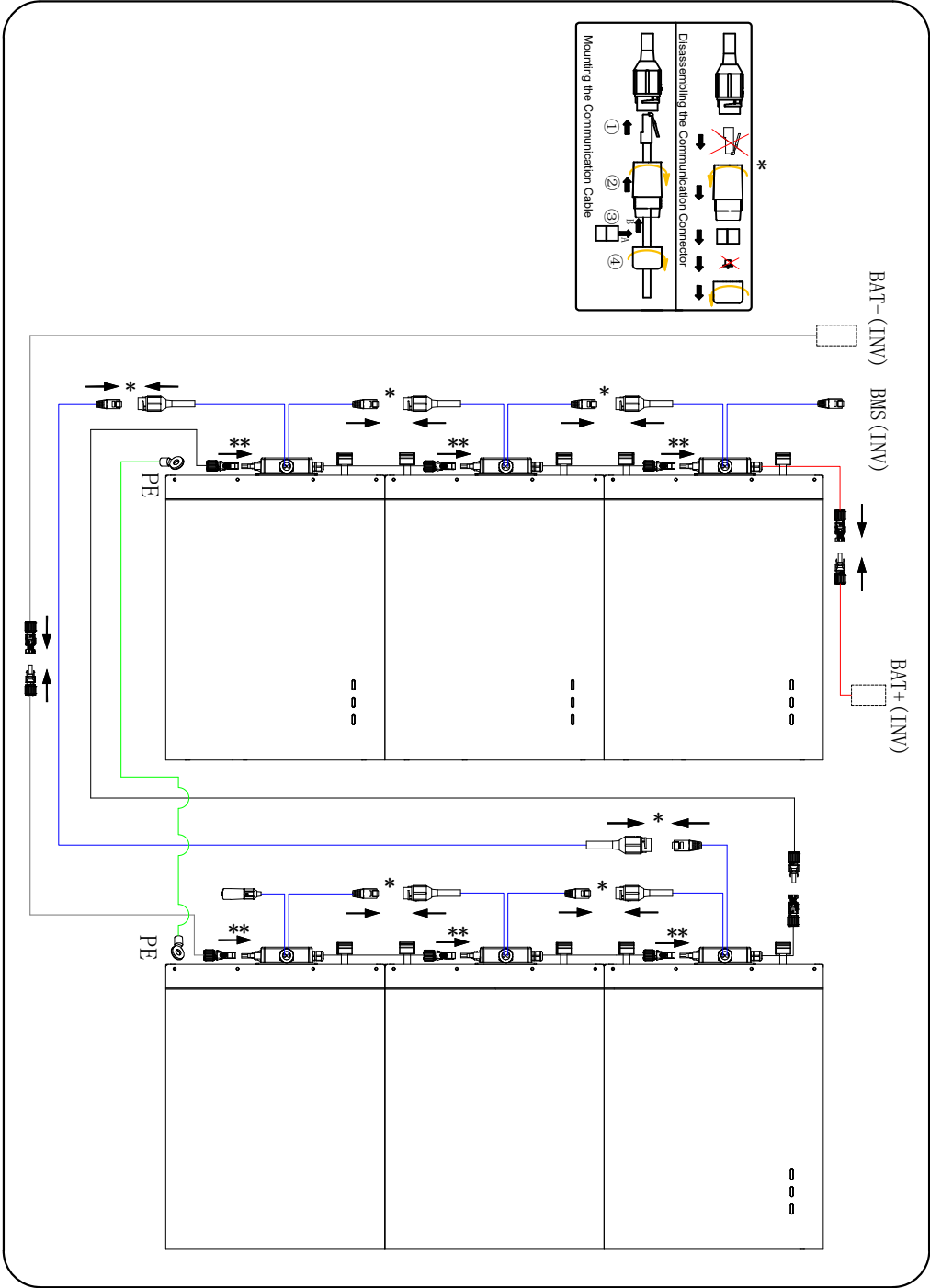
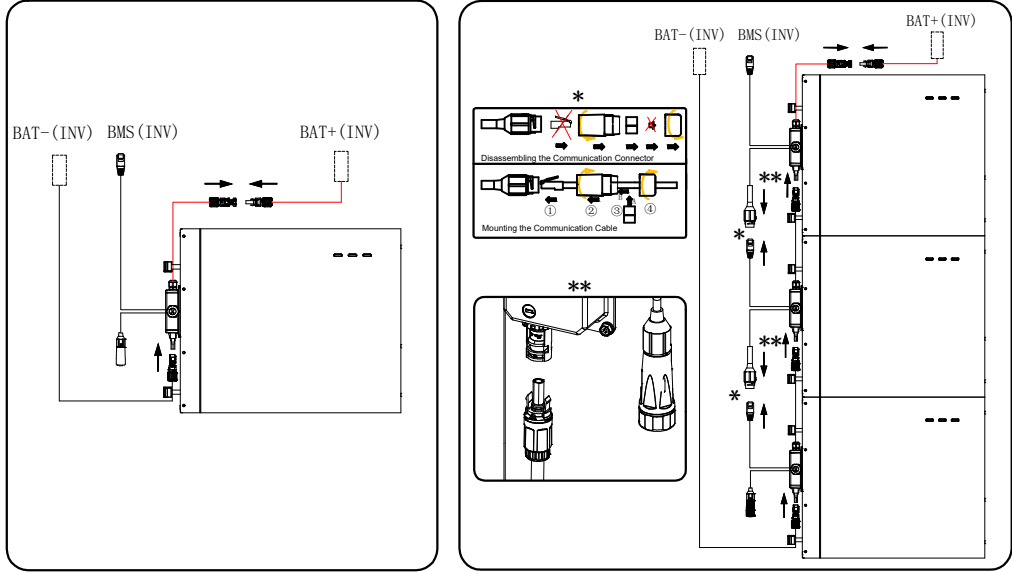
CAUTION

Danger to life due to burns caused by electric arcs through short-circuit currents. Short-circuit currents in the battery can cause heat build-up and electric arcs. Heat build-up and electric arcs may result in lethal injuries due to burns.

- Disconnect the battery from all voltages sources prior to performing any work on the battery.
- The upper power connector of the lower battery should connect to the lower power connector of the upper battery, otherwise the short-circuiting of the battery will occur.
- Observe battery safety information provided in the Safety and Installation Instructions.

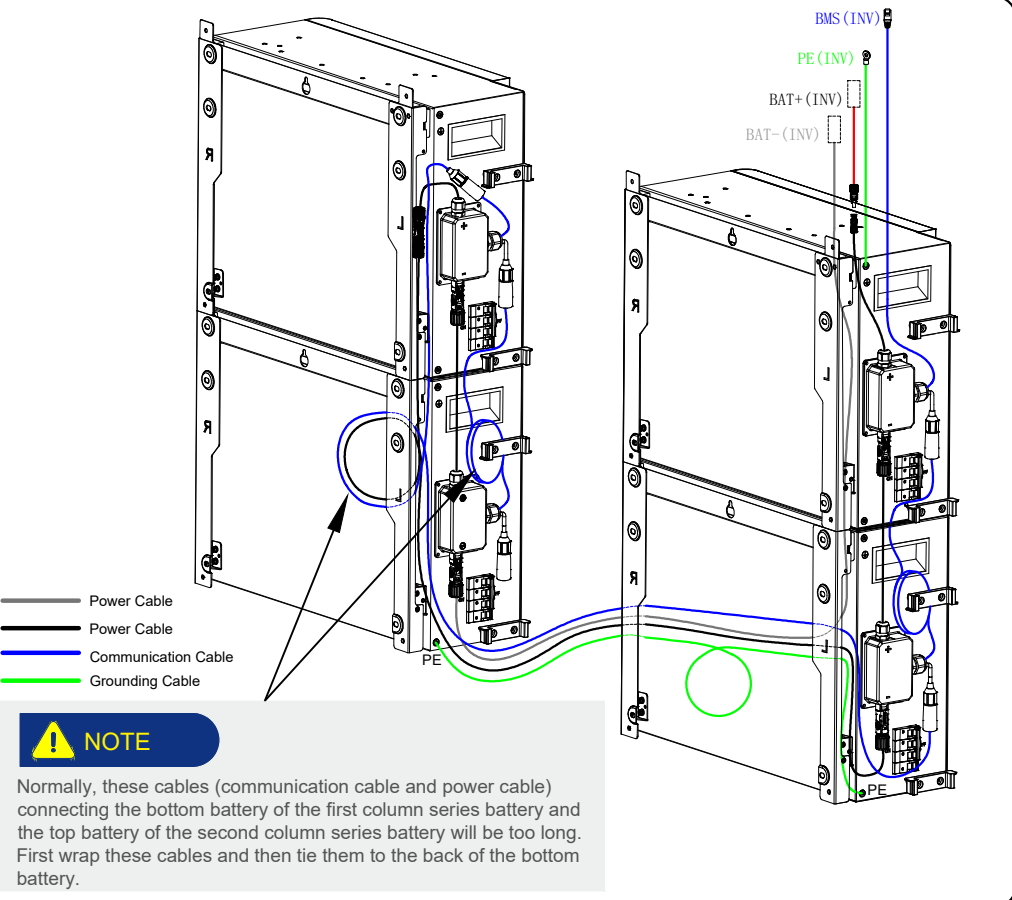


Battery Side Wiring Diagram of single Column



Battery Side Wiring Diagram of two Columns

09 10



5.0 Commissioning

NOTE

Normally, these cables (communication cable and power cable) connecting the bottom battery of the first column series battery and the top battery of the second column series battery will be too long. First wrap these cables and then tie them to the back of the bottom battery.

1

2

3

All white LEDs are flashing lasting 35 seconds. → Normal ✓

Yellow LEDs are glowing or flashing → Fault ✗

6.0 Install and Disassemble Cable Cover

Install the Cable Cover

1

2

Disassemble the Cable Cover

1

2

NOTE

In order to facilitate the operation of the battery circuit breaker, please remove the knockout of the cable cover if necessary.

7.0 Datasheet

SMILE-G3-BAT-3.8S

SMILE-G3-BAT-4.5S



@AlphaEnergyStorageSystem @AlphaESS

@alpha\_ess @AlphaESS www.alphaess.com

11 12